

Amy's Park

Named in memory of Amy Wolgin Wiener, Amy's Park is a beautiful property of ponds, marshes and forests in the uplands of Bolton Landing. It was purchased in February, 2012 and its hiking trails were officially opened to the public on July 13, 2012.

The Bolton property includes the headwaters for Indian Brook and contains important wildlife habitat within its large, unfragmented forest and wetland complexes. Protecting this fragile property prevents excess nutrients and sediments generated by development from flowing into Indian Brook and Northwest Bay.

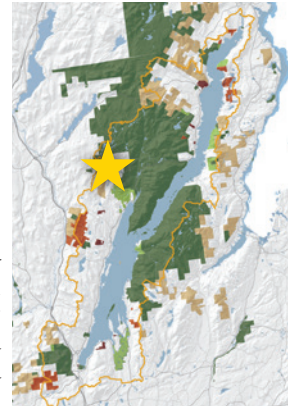
LGLC has created four hiking trails for passive recreation, exploration and education, which include lookout areas to view the active beaver pond and its resident wildlife, as well as a view of Lake George. In addition two boat launch areas have been designated on the western shore, off of Trout Falls Road.

LGLC purchased the property for \$500,000 from a conservation buyer, who held the land until LGLC was able to finalize the purchase. Funding for the deal was provided through two grants: a State Environmental Protection Fund grant from the New York State Office of Parks, Recreation and Historic Preservation, and a Federal North American Wetlands Conservation Act grant.

We are pleased to announce that you can now hike around the entire perimeter of Amy's Park: From the Padanarum parking lot, proceed on the yellow trail across Trout Falls Rd. to the red trail. Then go north (right) on the red trail across Trout Falls Rd. and follow it around the north pond to the blue trail. Then go south (right) on the blue trail to the orange trail and back (left) to the parking lot.

**Padanarum Road
Bolton Landing, NY
12814**

Trailhead Coordinates:
43° 38' 78" N
73° 38' 84" W



From the Northway (I-87): Take exit 24 for Bolton Landing/Riverbank Road. Follow Riverbank Rd/County Rt 11 east for 4 miles. Turn left onto Church Hill Rd. After 0.4 miles turn left onto North Bolton Rd/Rt 41 and continue for 1 mile. **Veer right to continue onto Padanarum Road and continue for another 1.9 miles to a "Y" where Trout Falls Road breaks off to the left and Padanarum continues to the right. Proceed on Padanarum Road for 1.2 miles to the parking lot on the left.

From Bolton Landing: From Sagamore Road in Bolton Landing, travel north on Route 9N for approximately 1.7 miles to County Rt 11/Bolton Landing-Riverbank Road. Turn left onto County Rt 11, then an immediate right onto North Bolton Rd/County Rt 41. Follow this road for 1.7 miles. Continue from **above.

For the Trout Falls Rd Boat Launch: Same as above, except go left onto Trout Falls Road at "Y". Follow for 0.9 miles to a designated parking area on the right.

The Lake George Land Conservancy's nature preserves are open to the public from dawn to dusk year-round for educational, scientific, and passive recreational pursuits.

4905 Lake Shore Drive
P.O. Box 1250
Bolton Landing, NY 12814
(518) 644-9673
www.lglc.org



Updated 09/2015

Amy's Park



Amy's Park

TRAILS

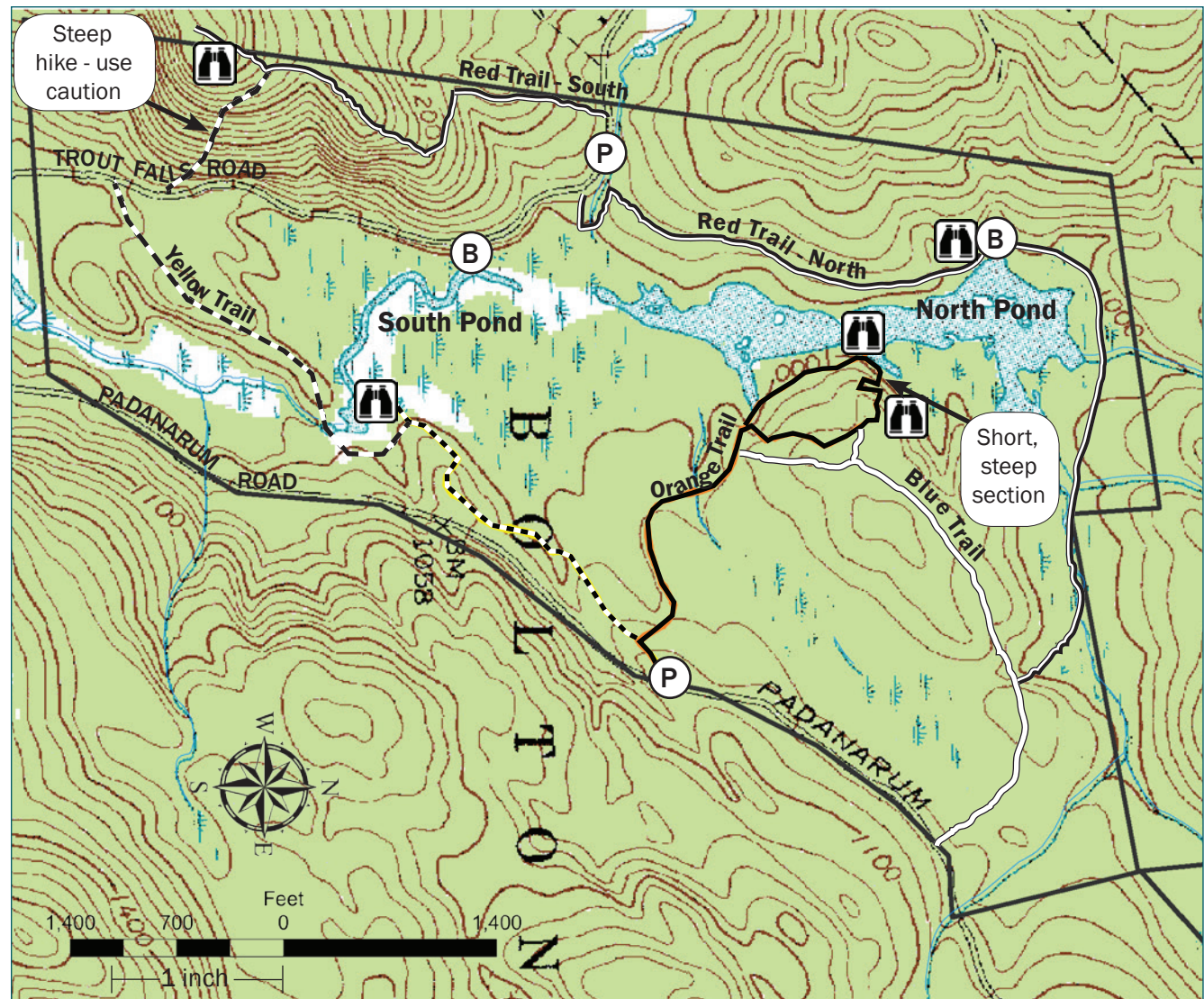
Amy's Park has multiple trails for hiking and two water access points. The yellow, orange and blue hiking trails start at the Padanarum Road parking area; the red trail and boat launches start from Trout Falls Rd.

To hike, from the Padanarum Rd. parking area follow the orange trail a short distance to a junction with the yellow trail. The orange trail turns right, while the yellow trail continues straight. The orange trail will lead you on a 1.0-mile path with a loop at the end that winds around some rocky ledges and overlooks the northern beaver pond. The yellow trail leads to a lovely, lichen covered rocky outcrop at the beaver dam (0.5 m) and continues across the stream below the beaver dam for another 0.5 miles to Trout Falls Rd.

The blue trail follows a logging road from the northeast corner of the park to the 0.5-mile-mark on the orange trail. It is relatively flat and wide and is good for cross-country skiing.

From the Trout Falls Rd. parking lot, the red trail climbs steadily south for 0.75 miles to a lookout point, with great views of Lake George. It can also be accessed from a section of the yellow trail via a *steep climb* from Trout Falls Rd. Going north from the Trout Falls Rd parking lot, the red trail primarily follows an old logging road for 1.45 miles, for an easy hike around the northern pond to connect with the blue trail.

To launch your canoe or kayak on the south pond, proceed from the intersection of Padanarum and Trout Falls Roads north on Trout Falls Road for 0.8 miles until you see a sign for the boat launch on the right hand side. From here there is a short portage to the water. **To launch into the north pond**, continue on Trout Falls Road for another 0.1 miles to the parking area. The red trail follows the brook downstream for a short distance before crossing it and heading back to the old logging road. Proceed for 0.65 miles to a sign pointing to the launch area.



PRESERVE MAP KEY

	Orange Trail	1.0 mile (including loop)
	Yellow Trail	1.25 miles (all sections)
	Red Trail	2.2 miles (all sections)
	Blue Trail	0.75 miles
	Scenic Lookout	
	Parking Lot/Trailhead	
	Boat Launch	

PRESERVE USE GUIDELINES

- Please hike only on the marked trails.
- Please be courteous of other guests at the preserve.
- No unauthorized removal of plants or animals. Hunting is allowed with LGLC permit. Please contact LGLC for permit application.
- No motorized or non-motorized recreational vehicles of any kind allowed on the preserve.
- Please keep dogs leashed at all times.
- No camping or fires. Please do not litter.
- Parking lot at Trout Falls Rd is not open in winter.