

# Membership Information

*(Please Print Clearly)*

Name \_\_\_\_\_

Address \_\_\_\_\_  
\_\_\_\_\_

Phone \_\_\_\_\_

Email \_\_\_\_\_

Membership Type: \_\_\_\_\_

Amount Enclosed: \_\_\_\_\_

Paid from July 1, 20\_\_ to June 30, 20\_\_

### ***Wait! There's more!***

I may be able to contribute the following skills to the organization (check all that apply):

- Accounting
- Architectural Design
- Art
- Business Management
- Computer
- Environmental Information
- Gardening
- Grant Writing
- Graphic Design
- Heavy Equipment Operation
- Historical Research

*(Continue on next panel)*

- Painting
- Printing/Photocopying
- Program Planning
- Public Relations
- Retailing
- Sign Making
- Surveying
- Tax Preparation
- Telephone Calls
- Woodworking
- Other, as listed below: \_\_\_\_\_

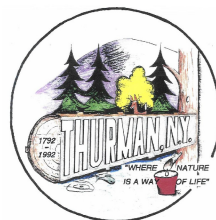
**Make checks payable to:**  
Thurman Station Association, Inc.

**Mail to:**  
TSA Membership Campaign  
P.O. Box 29  
Athol, NY 12810

Visit online at  
[www.thurmanstation.com](http://www.thurmanstation.com)

Contact: [stationmaster@thurmanstation.com](mailto:stationmaster@thurmanstation.com)

*Thurman Station Association is a not-for-profit corporation.  
Contributions are tax deductible to the extent allowed by law.*



# *Thurman Station Association, Inc.*



Photo by Greg Klinger

## **Trains & Tourism**

*Our history  
and  
Our future*

## Work with us

# You Can Help

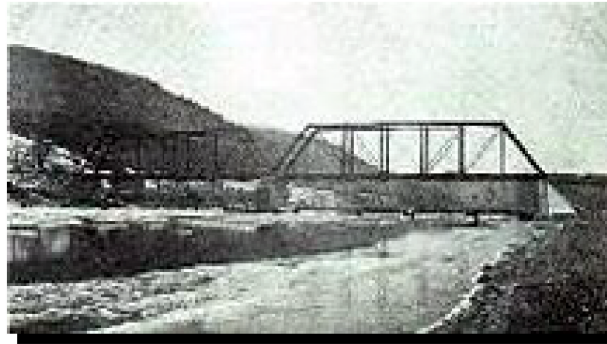
## Join Now

The Thurman Station Association Inc., is a not-for-profit corporation working with Warren County and the Town of Thurman to help make Thurman a significant destination in the First Wilderness Heritage Corridor, as it use to be from the time the original station was built in 1870 until passenger service was discontinued in 1956.

Situated near I-87 and Lake George Village, Thurman Station is an ideal boarding place for those wishing to travel north to North Creek for a day's outing or south to Saratoga Springs for shopping or to make a connection on Amtrack. Either way, passengers enjoy unparalleled beauty of Hudson River shoreline as the train wends its way through Thurman.

After the present Thurman Station pavilion was completed in 2009, the association coordinated Thurman Station Farmers' Market for two years, featuring special activities to entertain train visitors, and using the site to distribute literature about Thurman businesses and events. In 2011 we welcomed a new train operator, Saratoga and North Creek Railway. Although our role at the station has evolved, our mission to help Thurman Station serve the railroad and surrounding communities remains unchanged. Work with us in that effort.

*Recreate the past  
and  
Build the Future...*



*Bridge to Warrensburg in 1905*



*Bridge to Warrensburg, still spanning the river.*

Select the appropriate membership category and send in the attached application form with designated payment today. You will receive a membership card and emailed notification of upcoming meetings and other issues pertinent to TSA.. The membership year runs from July 1 - June 30; a member paying dues April 1 or later will be considered to have membership paid through June 30 of the following year.

\_\_\_ **Individual Member - \$15.00 per year,**  
available to any adult not covered by one of the following categories.

\_\_\_ **Family Member - \$25.00 per year,**  
available to a family of two or more as a single membership having not more than two votes.

\_\_\_ **Student Member - \$10.00 per year,**  
available to any full-time student who shall be eligible to vote and to be a director, but not to be an association officer unless 18 years of age or older.

\_\_\_ **Contributing Member - \$50.00 per year or higher,** available to an individual, group or firm supporting the objectives of the association.

\_\_\_ **Lifetime Member - \$250.00,** available to anyone who enrolls for life.

***Become a member!***

**The Association needs a  
strong membership base to  
accomplish its goals.**

*Please continue on reverse.*



See Saratoga & North Creek Railway's updated schedule and reserve a seat at <https://www.sncrr.com>.