

Last Great Shoreline

PRESERVE

The Last Great Shoreline Preserve is located in the Town of Putnam and was acquired in 2009. The preserve is comprised of four parcels totaling 351 acres.

The Last Great Shoreline Preserve protects approximately 1,925' feet of Lake George Shoreline and is one of the most ecologically significant and undeveloped parcels on the eastern shore of Lake George. The Preserve also includes Jumping Rock. Jumping Rock itself will remain accessible to the public only by water; the remainder of that property is closed to public access.

The Last Great Shoreline Preserve is primarily forested, the only exception being a 35-acre wetland complex of Sucker Brook. The Sucker Brook wetlands include a rare white cedar swamp and serves as an important area for wildlife, particularly birds and amphibians. The wetland also stores flood waters, recharges groundwater, and filters surface water, thereby contributing clean water to Lake George.

The Preserve's trail system is currently 3.0 miles in total length and includes two scenic viewpoints. The kiosk and trailhead are located on the left-hand side of Warrick Road, approximately 0.8 miles from its intersection with Glenburnie Road, and a short walk from the designated parking area on the right side of Warrick Road. ***Please do not park on the shoulder of the road.***

Please enjoy our seasonal dock that will accommodate two 25-foot boats. Canoes and kayaks are welcome too along the shore! The dock is open dawn to dusk; we ask that you limit your time to three hours. If it is early or late in the season, call ahead for availability.

Warrick Road
Putnam, NY 12861
Washington County

Parking Coordinates:
43° 76' 06" N
73° 44' 75" W'

From Ticonderoga:

Follow State Rt. 22 south from Montcalm Street/ Rt. 74 for 5.8 miles. Turn right/west onto Rt. 1/Glenburnie Road. Follow for 1.5 miles. Turn left onto Warrick Road. Follow for approximately 1/2-mile to the parking area on right.

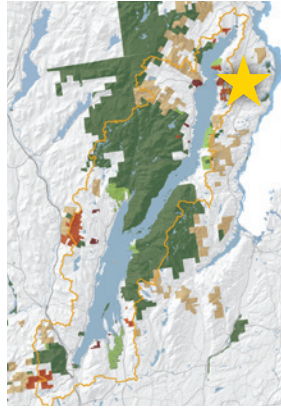
From Whitehall: Follow State Rt. 22 north from its intersection with Rt. 4 in Whitehall for 19 miles. Turn left/west onto Rt. 1/Glenburnie Road. Follow for 1.5 miles. Turn left onto Warrick Road. Follow for approximately 1/2-mile to the parking area on right.

Please be mindful of cars when crossing the road to the trailhead.

The Lake George Land Conservancy's nature preserves are open to the public from dawn to dusk year-round for educational, scientific, and passive recreational pursuits.

Visit us online at www.lglc.org for information on our nature excursions and events, land protection, and preserving Lake George's unique natural heritage.

4905 Lake Shore Drive
P.O. Box 1250
Bolton Landing, NY 12814
(518) 644-9673
www.lglc.org



LAKE GEORGE
LAND CONSERVANCY

Updated 08/2015

Last Great Shoreline

PRESERVE



Last Great Shoreline

PRESERVE TRAILS

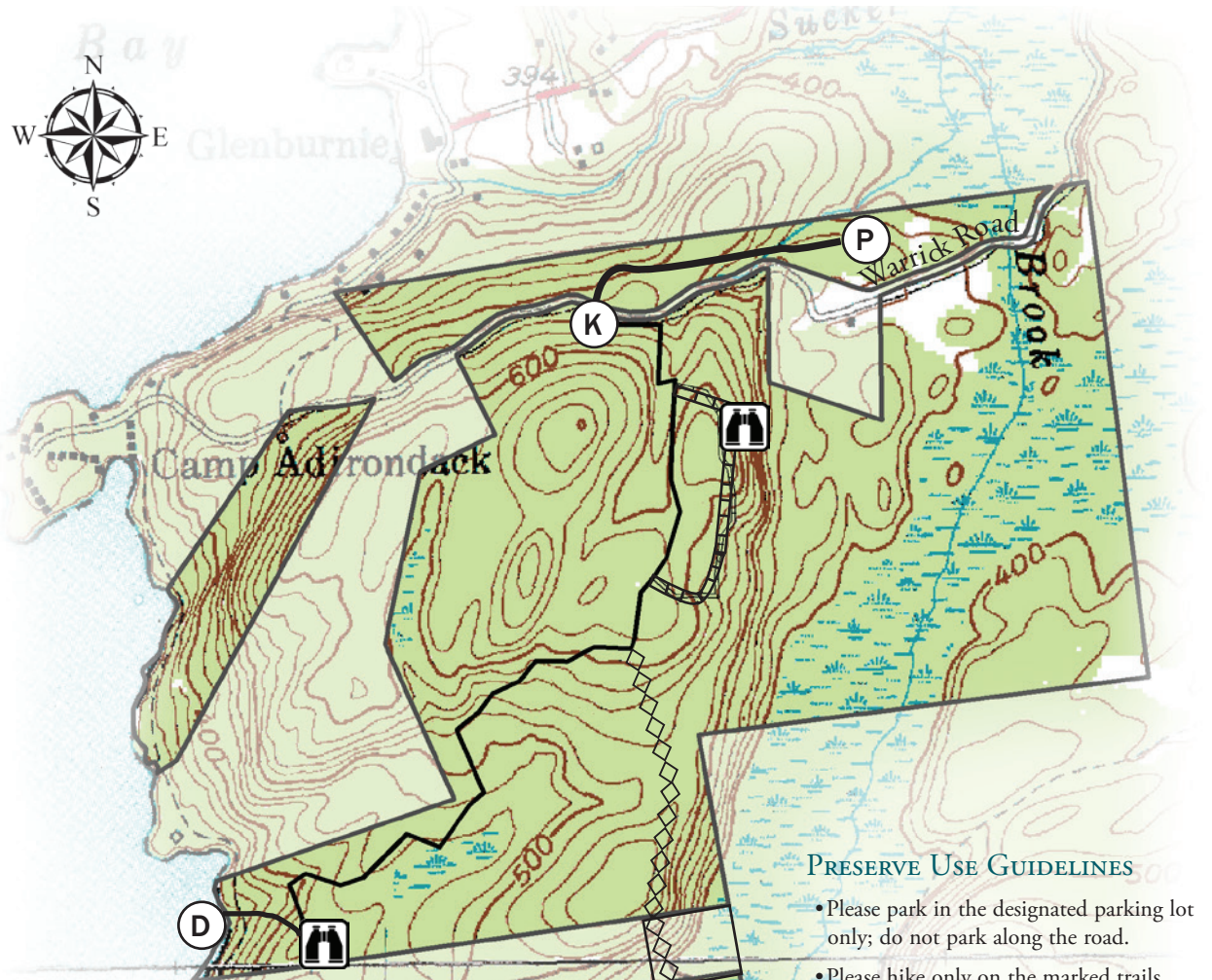
The Lake George Land Conservancy has established three trails at the Last Great Shoreline Preserve: the blue trail, Andia-ta-roc-te Trail (red) and the yellow trail.

After a short walk from the parking area to the kiosk, the blue trail gradually descends from the kiosk at an elevation of 552 feet approximately 1.20 miles southwest through the preserve to a scenic overlook that provides a west-facing view of Lake George. The blue trail is easy to navigate, with minimal elevation change. From the overlook the trail makes a short but steep descent to the dock.








The Andia-ta-roc-te Trail is demarcated by red markers and is an off-shoot of the blue trail. After heading east a short distance to an opening overlooking Sucker Brook and the Green Mountains to the east, the red trail turns south heading along the upper edge of the Sucker Brook valley. After turning west, it reconnects with the blue trail. It is a relatively easy trail, only 0.35 miles in length.

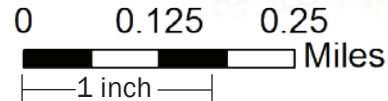
Andia-ta-roc-te is the Iroquois name for the lake, meaning "where the lake is closed in by mountains." The name was chosen to honor the native people who lived in this area and to try to keep alive their sense of connection with nature and their stewardship of land and water.

Please note the new yellow triangle connector trail. Starting at the intersection with the blue trail it follows the ridge line, then descends a short, **very steep** rocky area before following a logging road to the yellow trail at Gull Bay Preserve. **Please use caution!**



PRESERVE MAP KEY

	Blue Trail	1.45 miles
	Andia-ta-roc-te (red) Trail	0.35 miles
	Yellow Trail (connector to Gull Bay)	1.25 miles
	Scenic View	
	Parking	
	Kiosk; Trailhead	
	Dock Space	



PRESERVE USE GUIDELINES

- Please park in the designated parking lot only; do not park along the road.
- Please hike only on the marked trails shown on the trail map.
- Please be courteous of other guests at the preserve.
- No unauthorized removal of plants or animals. Hunting is permitted by LGLC permit. No trapping is allowed.
- No motorized or non-motorized recreational vehicles of any kind allowed on the preserve.
- The dock is available for use seasonally (see "overview" for details).
- Please keep dogs leashed at all times.
- No camping or fires. Please do not litter.