

Peggy's Point

Peggy's Point was formally dedicated on June 24, 2011, in honor of Margaret "Peggy" A. Darrin. A long-time supporter of LGLC and all things Lake George, Peggy donated the 1.9-acre property to LGLC in 2005 to be maintained as a park for public enjoyment.

The park includes 315 feet of lake shoreline, a popular spot for anglers and anyone who wishes to sit and enjoy a peaceful moment on the point. Having previously hosted cabins, a convenience store and a gas station, the property is now a beautiful lawn with towering birch trees and space for families to play and picnic together. The property also has a gazebo with benches for a shaded spot to rest.

A meandering path leads from the park gate to Mary Lou's Friendship Garden, a 30-foot diameter bed, consisting of perennials provided by the public in honor of or in memory of a special place, person or event. The Garden is named in honor of Mary Lou Doulin, Hague resident and volunteer extraordinaire who has kept watch over Peggy's Point and done an amazing amount of work to keep the Garden looking great.

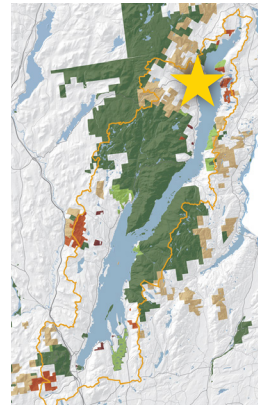
We invite the public to add a plant free of charge, however we ask that some guidelines be followed to ensure the health and overall enjoyment of the garden. Guidelines and further details are available on the following pages and at www.lglc.org/NaturePreserves/PeggysPoint.

Peggy's Point is in the center of the Town of Hague, just a few hundred feet north of the juncture of Rt 9N and Rt 8.

**Rt. 9N/Lake Shore Dr.
Hague, NY 12836**

Entrance Coordinates:

43°44'43.8"N
73°29'51.6"W



From the South/Northway (I-87): Take exit 24 off of I-87 for Bolton Landing/Riverbank Road. Follow Riverbank Rd/County Rt 11 east for 4.7 miles to its end at Rt 9N. Turn left onto Rt 9N and travel north for 17 miles. Peggy's Park will be on the right.

From the North/Ticonderoga: From the Ticonderoga traffic circle, head south on Rt 9N for 8.9 miles. Peggy's Park will be on the left.

Note about Parking: There is no designated parking area for Peggy's Point. Parking is available on roadsides and at the Town of Hague Community Center on Rt 8 (9793 Graphite Mountain Rd), less than 1/2-mile from the park.

The Lake George Land Conservancy's nature preserves are open to the public from dawn to dusk year-round for educational, scientific, and passive recreational pursuits.

Visit us online at www.lglc.org for information on our nature excursions and events, land protection, and preserving Lake George's unique natural heritage.

4905 Lake Shore Drive
P.O. Box 1250
Bolton Landing, NY 12814
(518) 644-9673

www.lglc.org



Updated 03/2015

Peggy's Point



Peggy's Point

Visitors are welcome to enjoy Peggy's Point year-round, dawn to dusk. The lawn is flat and easy to walk for people of all levels of mobility.

Enter Peggy's Park from the Julia Beaty Gate on Rt 9N, and follow the wood-chipped path to Mary Lou's Friendship Garden or head out across the lawn to the Lake George shoreline just 600 feet from the road.

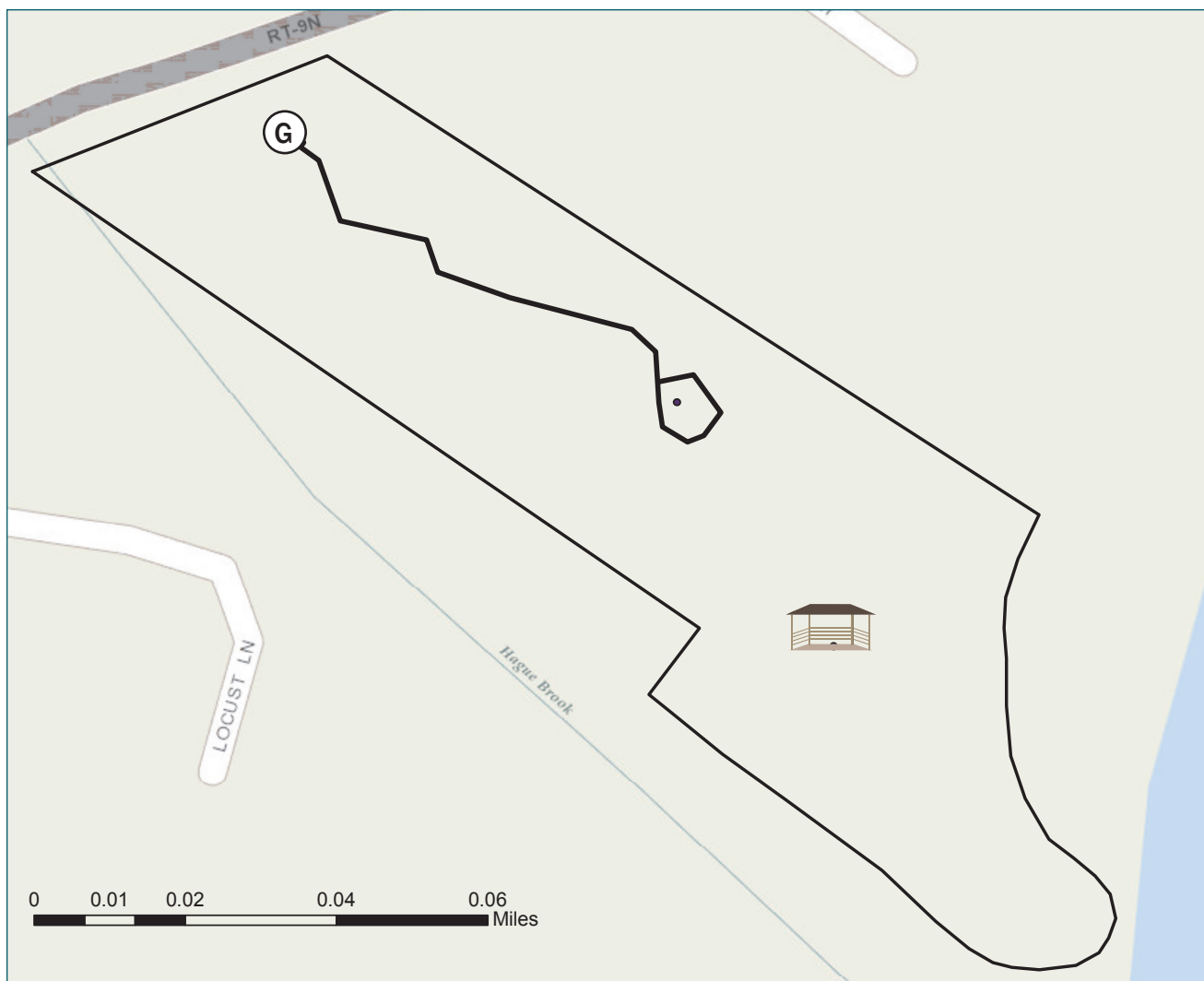
Park use includes picnicking, dog-walking, fishing and other passive recreation. Swimming is not permitted. For guests who would like to swim, please visit the neighboring Robert E. Henry Memorial Park, which is run by the Town of Hague, and includes a public beach that is open June through Labor Day.

Mary Lou's Friendship Garden

We welcome you to add a plant to Mary Lou's Friendship Garden in honor or memory of a special person, place or event but ask that you contact LGLC before planting. LGLC volunteers will assist you with choosing the right perennial or shrub, and will either help you plant the item or plant it for you.



Identification labels are also available for a nominal fee and may be ordered through LGLC. For additional information or to inquire about adding a plant to the Friendship Garden, please call 518-644-9673 or email shoffman@lglc.org.



PARK AND GARDEN RULES

- Be courteous of other park guests;
- No unauthorized removal of plants or animals;
- Be respectful of plants and markers in the Friendship Garden;
- Do not litter; help keep the park clean for all to enjoy by taking out what you bring in;
- Clean up after dogs and keep them leashed at all times;
- No swimming allowed;
- No fires permitted;
- Please help keep our trees healthy - do not carve or otherwise damage bark.

PARK KEY

- ⓐ Julia Beaty Entrance Gate
- Garden Path 365 feet
- ☞ Gazebo

