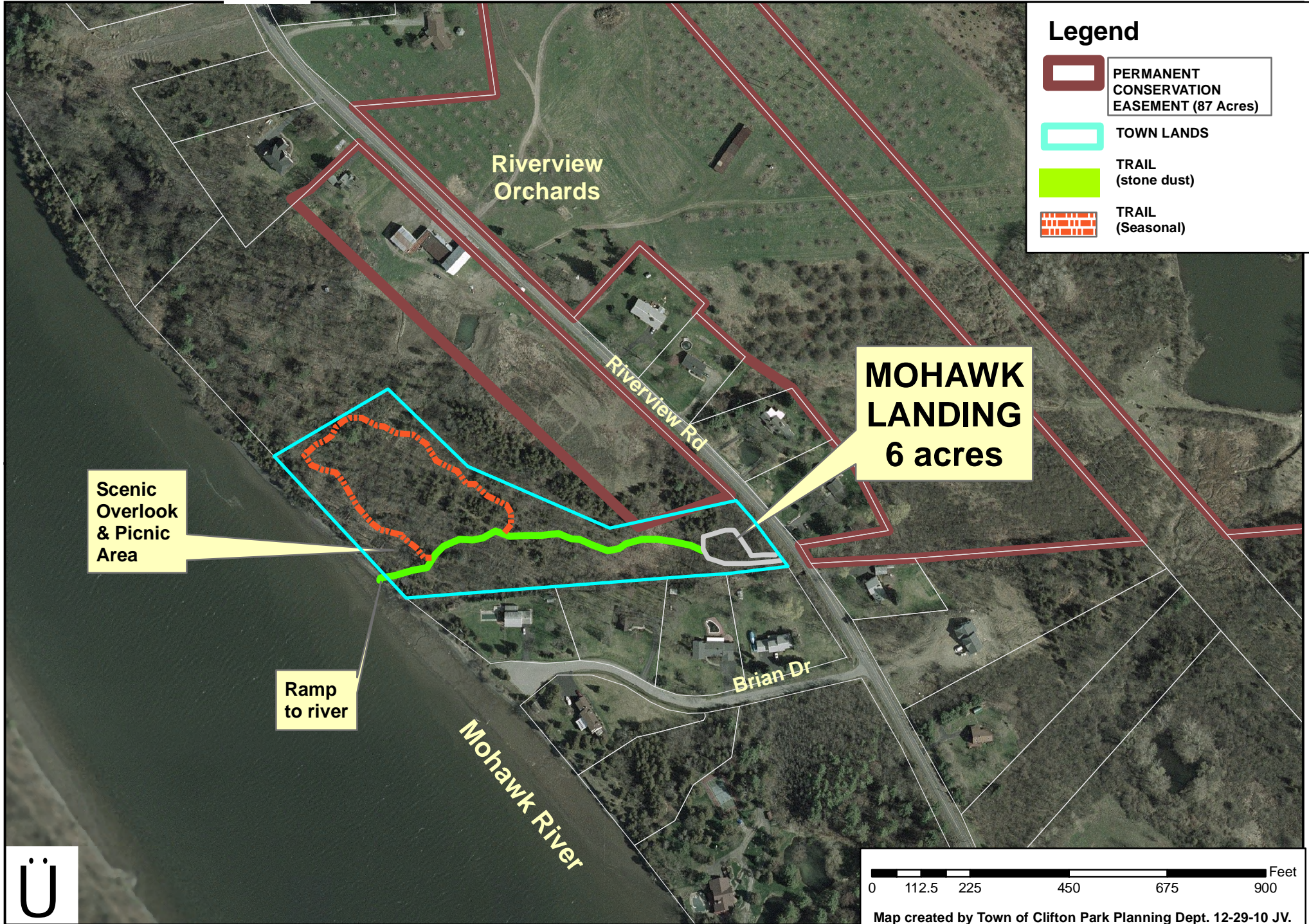



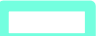




MOHAWK LANDING

Riverview Road, Town of Clifton Park, NY



Legend

-  PERMANENT CONSERVATION EASEMENT (87 Acres)
-  TOWN LANDS
-  TRAIL (stone dust)
-  TRAIL (Seasonal)

MOHAWK LANDING
6 acres

Scenic Overlook & Picnic Area

Ramp to river

