

# Gull Bay PRESERVE

The Lake George Land Conservancy's purchase of the Gull Bay Preserve, located in the Town of Putnam, Washington County, marked a significant conservation success in 2003.

This 434-acre woodland hillside property contains old logging roads and two wetland swamps, which represent the southern portion of Sucker Brook, one of the most important wetlands in the Lake George watershed. In autumn, significant numbers of migratory waterfowl rest in the wetland before their journey south to warmer climates.

The western side of the property has a magnificent scenic vista of Lake George. The Lake George Land Conservancy maintains over four miles of hiking trails and hosts field trips for local schools and clubs.

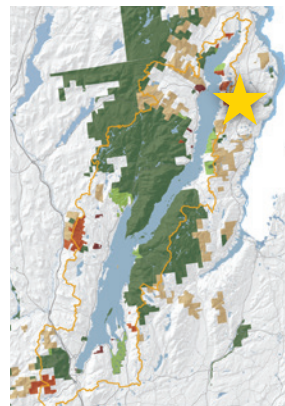
The Gull Bay Preserve has long been a popular destination for those wishing to see a great blue heron rookery (nesting colony) during its active season of March through July. Unfortunately, only one or two herons have nested there in the last few years. Though rookeries may be used for decades, there are several factors that may cause site abandonment, including increased predation, a loss of food availability, human disturbance, and death of trees supporting the nests.

We hope to see more of these majestic birds in the future, but for now guests can still enjoy watching the pond's resident beavers and other waterfowl. Please keep a safe distance and use caution to reduce disturbance and stress on the animals.

**Don't forget that there is a trail that connects to the Last Great Shoreline. It is marked with yellow triangles (see also the LGS trail map). This land acquisition was made possible by generous donors.**

Sagamore Rd  
Putnam, NY 12861

**Trailhead Coordinates:**  
43° 44' 14" N  
73° 27' 25" W



**From the Northway (I-87):** Take exit 28, and go east on Rt. 74 into Ticonderoga. Rt. 74 will combine with Rt. 22 for a few miles. At the intersection where Rt. 74 turns east towards the fort (there's a blinking traffic light and Montcalm St. on the right), continue south on Rt. 22 towards Whitehall for 9.5 miles. Turn right (west) onto Gull Bay Rd. At ~1.75 miles, turn right onto Sagamore Rd. The preserve entrance is a dirt driveway, 0.6 miles down Sagamore Rd., on the right.

**From the South:** Take the Northway to exit 20. Go east on Route 149 to Fort Ann (~11.75 miles). Turn left (north) onto Route 4 to Whitehall (~11 miles). From the intersection of Rt. 22 and Rt. 4 East in Whitehall, travel north on Route 22 for 15.4 miles. Turn left onto Gull Bay Road. At ~1.75 miles, turn right onto Sagamore Road. The preserve entrance is a dirt driveway, 0.6 miles down Sagamore Rd., on the right.

The Lake George Land Conservancy's nature preserves are open to the public from dawn to dusk year-round for educational, scientific, and passive recreational pursuits.

Visit us online at [www.lglc.org](http://www.lglc.org) for information on our nature excursions and events, land protection, and preserving Lake George's unique natural heritage.

4905 Lake Shore Drive  
P.O. Box 1250  
Bolton Landing, NY 12814  
(518) 644-9673  
[www.lglc.org](http://www.lglc.org)



Updated 08/2015

# Gull Bay PRESERVE





# Gull Bay

## PRESERVE TRAILS

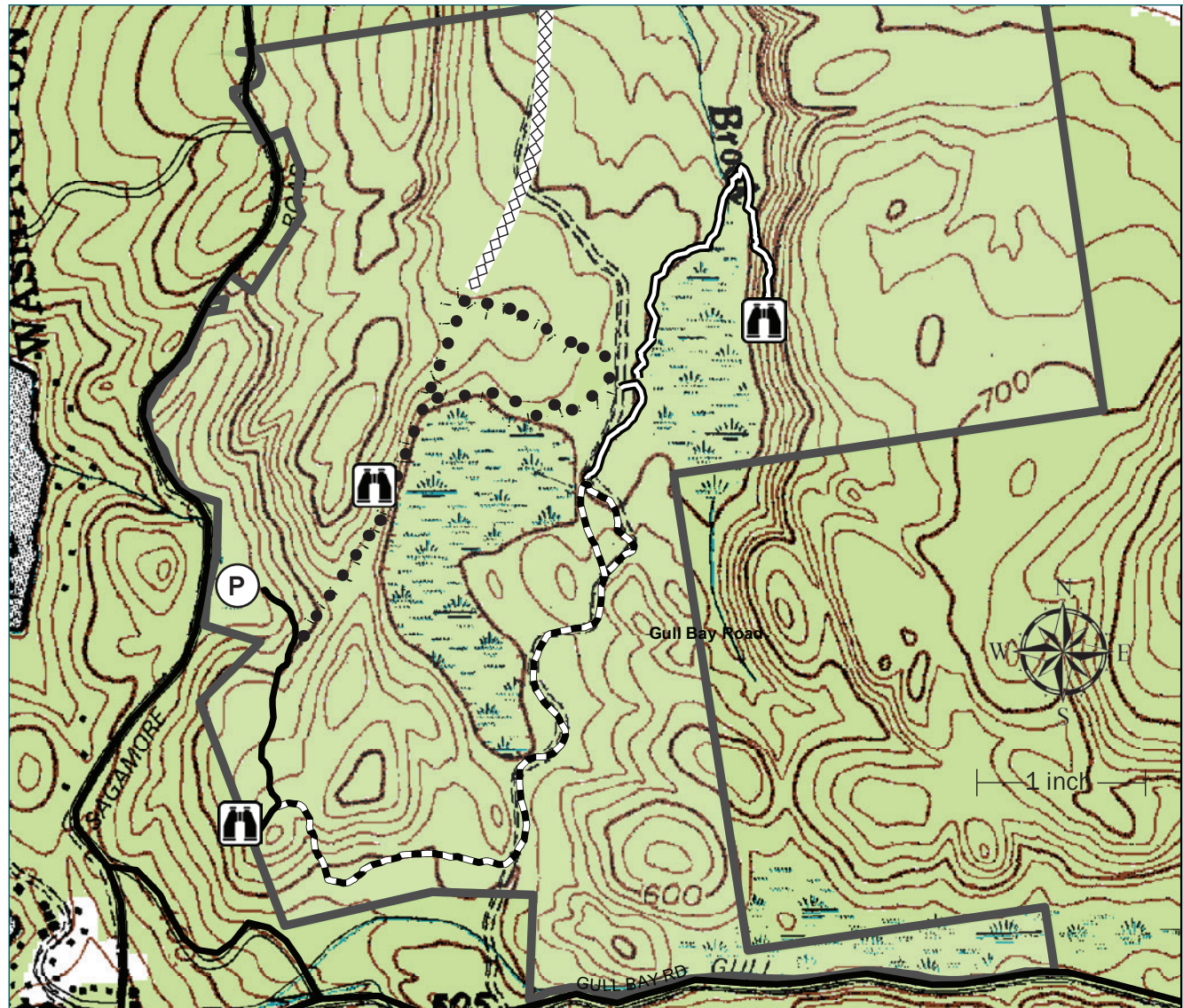
From the parking area, walk a short distance following an old logging road to the preserve's kiosk. From here the blue trail continues on the logging road uphill for less than half a mile, ending at an overlook that peeks out to Gull Bay and to the south over Lake George. Bring your lunch and enjoy the new picnic table at the top!

The yellow trail starts from the blue trail's northern end and follows the pond's western ridge to a loop through a fern-laden forest north of the pond.

The new connector trail, marked with yellow triangles, continues on from the yellow loop, and leads northward to the Last Great Shoreline Preserve. This trail is easy/moderate, except for one short but **very** steep section. *Please use caution.*

The more popular and well-used orange trail breaks from the blue trail just downhill from the overlook. The orange trail begins with a rocky downhill climb, but levels out beyond that for a lovely hike along an old logging road that passes vernal pools and varied habitats full of wildlife in all seasons. The trail ends with a short loop that leads close to the pond's shore (and beaver dam) for great wildlife viewing.

The orange and yellow loops are connected by the red trail, which follows a path below and parallel to the beaver dam. At the intersection with the yellow trail, you may also follow the red trail further north along a second beaver pond, crossing the outlet to another overlook that provides an expansive view of the ponds and wetlands. *This trail climbs a steep rocky ledge; please hike with caution!*



### PRESERVE MAP KEY

	Blue Trail	0.3 miles
	Orange Trail	1.0 mile
	Yellow Trail Loop	1.0 mile
	Red Trail	0.65 miles
	Yellow Connector Trail	1.25 miles
	Scenic Lookout	
	Parking Lot/Trailhead	

### PRESERVE USE GUIDELINES

- Please hike only on the marked trails shown on the trail map.
- Please be courteous of other guests at the preserve.
- No unauthorized removal of plants or animals. Hunting is allowed with an LGLC permit. Please contact LGLC for permit application.
- No motorized or non-motorized recreational vehicles of any kind allowed on the preserve.
- Dogs must be leashed at all times.
- No camping or fires. Please do not litter.