

The Terzian

WOODLOT

This 133-acre property was added to the Lake George Land Conservancy (LGLC) portfolio in November 2014. A total of 1.2 miles of trails have been established and connect to trails on the Silver Bay YMCA property. Trails for Silver Bay YMCA can be found on their website (www.silverbay.org/campus-map). If you would like to hike their trails, we ask that you become a member of Silver Bay.

Owned by the Terzian Family for decades, this parcel was sold to LGLC after an overwhelmingly successful fundraising campaign. The project was the perfect example of a community effort and thanks to the neighbors of Sabbath Day Point and Silver Bay all the monies for acquisition and stewardship were raised in three short months!

Silver Bay community member and now LGLC Board Member, Elizabeth Guest, was instrumental in the support behind this project.

“I believe that the success of this project can be attributed to the tightly-knit Silver Bay and Sabbath Day Point communities, and our strong feelings for protecting the Terzian parcel and the land around us that we all enjoy and share. We were all acutely aware of the importance of keeping the property forever wild, for many reasons – all ultimately benefiting the health and future of Lake George and its surroundings.”
- Elizabeth Guest

The acquisition of this property has allowed LGLC to ensure the protection of a Lake George tributary, create public access to beautiful forests and ridges, and provide habitat and refuge for the endangered timber rattlesnakes. *If you see any snakes, please keep a safe distance and do NOT report your sightings online (to avoid unnecessary encounters by curious hikers).*

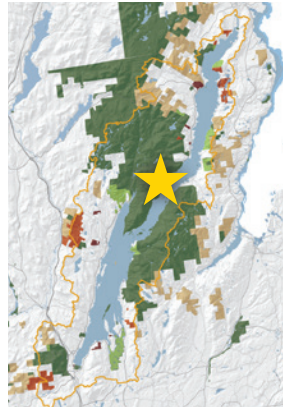
Lake Shore Drive/Rt 9N
Hague, NY 12836

Kiosk Coordinates:
43.675552, -73.516921

From the South/ Northway (I-87):

Take exit 24 for Bolton Landing/Riverbank Road. Follow Riverbank Rd/ County Rt 11 east for 4 miles. Turn left onto Rt 9N. Follow Rt 9N for 11.5 miles. There is a dirt road on the left 75 feet past Carney Point Road, where there is a sign post without a sign.

From the North/Ticonderoga: From the North/Ticonderoga: From the Ticonderoga traffic circle, head south on Rt 9N for 14.5 miles. There is a dirt road on the right 75 feet after you pass 7876 Lake Shore Drive (Rt 9N) (per Google Maps), where there is a sign post without a sign.



The Lake George Land Conservancy's nature preserves are open to the public from dawn to dusk year-round for educational, scientific, and passive recreational pursuits.

Visit us online at www.lglc.org for information on our nature excursions and events, land protection, and preserving Lake George's unique natural heritage.

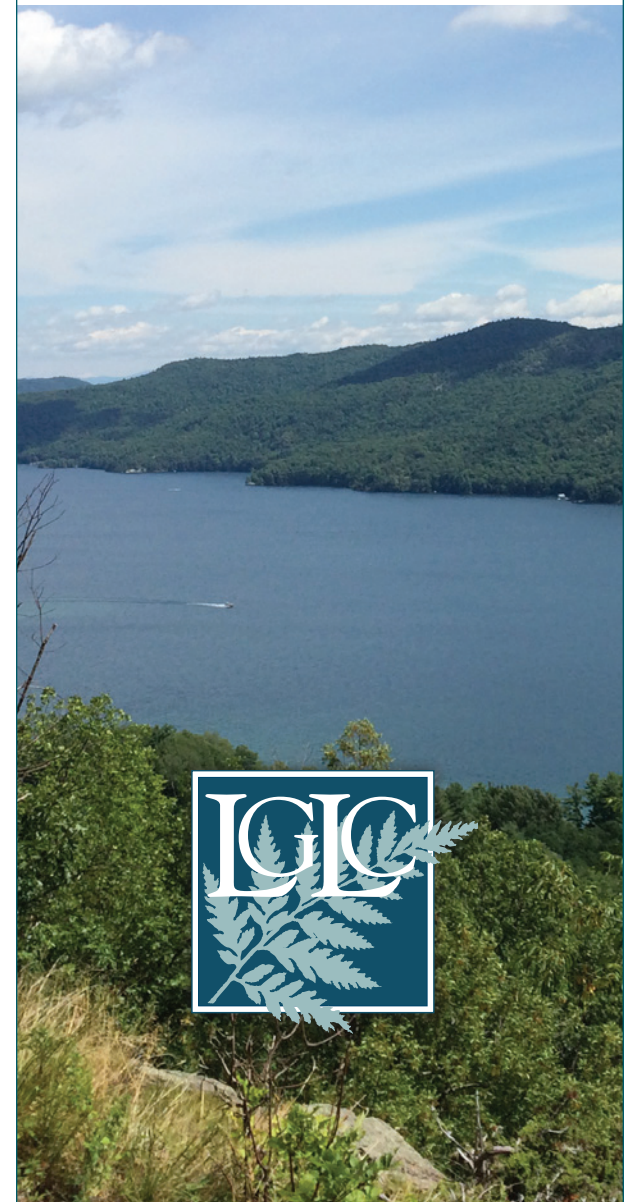
4905 Lake Shore Drive
P.O. Box 1250
Bolton Landing, NY 12814
(518) 644-9673
www.lglc.org



Terzian

Woodlot

PRESERVE



Terzian Woodlot

TRAILS

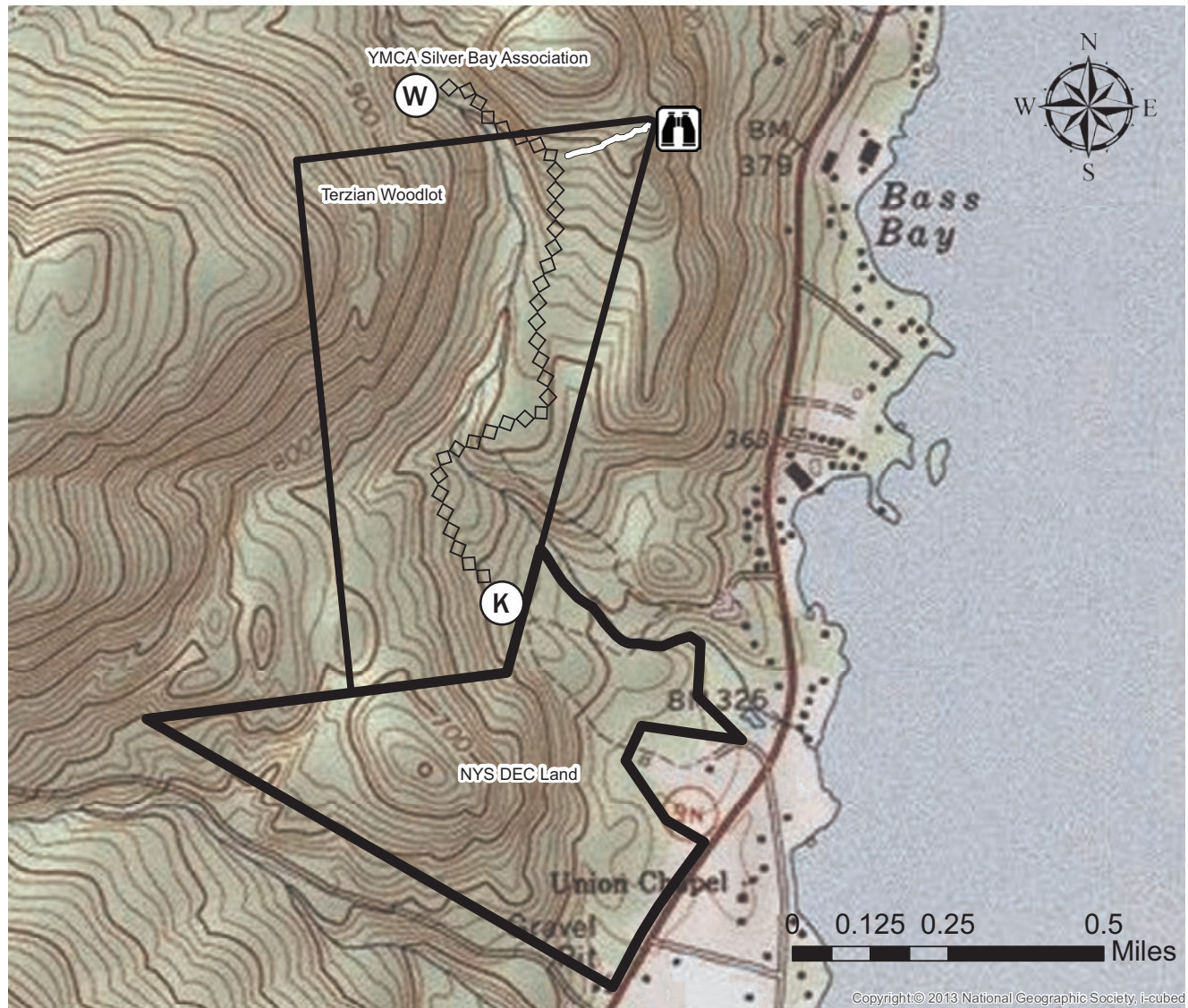
While it is not an official DEC trailhead, anyone can reach the Terzian trail system through DEC state forest land, which borders Lake Shore Drive and adjoins the Terzian Preserve. You will note that there is an old DEC trailhead post without a sign. By entering there you will quickly come to a field (note: no motor vehicles past the field). At the far end of the field is a well-worn dirt road, which if you follow it will take you to our kiosk and the entrance to the preserve (approximately 0.3 miles).

Note that the road makes a right turn within 75 feet of the field (at a "T" intersection), then after some distance makes another sharp right turn, before making a sharp left turn, gradually bearing to the left (past the stream on your right) up a small hill to the kiosk and start of the LGLC-marked trails.




From the kiosk, the trail climbs gradually for 0.2 miles until it reaches the top of a knoll, then goes down to a small stream crossing. It goes up and over a small knoll, then down to a larger stream crossing. The trail follows the stream for a hundred feet, then makes a sharp turn to the right. The trail goes straight for 250 feet until it comes to a logging road. It makes a sharp left turn and climbs gradually for 0.75 miles, crossing our boundary line onto Silver Bay lands before descending gradually to Uncas Falls.

The intersection with the yellow trail to Uncas Cliff is at 1.0 mile (from the kiosk). The yellow trail is level for 250 feet, then makes a short, steep climb before leveling off and following the ridge to Uncas Cliff, with spectacular views of Lake George.

The end of both trails connect to the Silver Bay Trails (see www.silverbay.org/campus-map).



PRESERVE MAP KEY

- ◇◇◇ Orange Trail 1.1 miles
- ▬ Yellow Trail 0.1 miles
-  Scenic Lookout - Uncas Cliff
-  LGLC Kiosk/Trailhead
-  Uncas Falls

PRESERVE USE GUIDELINES

- Please hike only on the marked trails shown on the trail map.
- Please be courteous of other guests at the preserve.
- Please be cautious of timber rattlesnakes. Do NOT disturb.
- No unauthorized removal of plants or animals. Hunting is allowed at this preserve. A permit is required.
- No motorized or non-motorized recreational vehicles of any kind allowed on the preserve.
- Please keep dogs leashed at all times.
- No camping or fires. Please do not litter.